

ASGPipeline™ Generation 3.0



YOUR NEEDS

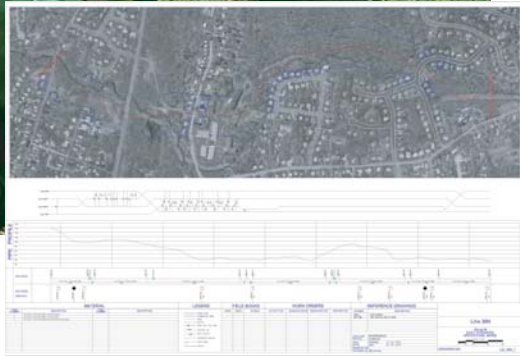
Pipeline operators produce large numbers of alignment sheet files and documentation each year to meet regulatory, safety, and maintenance requirements. The challenge is to generate high product quality at low production cost, results largely determined by the software they use. To meet the challenge, operators must have a flexible, efficient solution that

- ✦ Allows customization of the alignment sheet layout to adapt to new data and requirements
- ✦ Arranges densely populated data automatically to increase legibility and eliminate manual editing
- ✦ Provides batch processing for efficiency in creating outputs in a variety of formats
- ✦ Can be configured to various GIS or CAD systems to provide flexibility and continuous service as system needs grow

THE ASGPipeline™ SOLUTION

Sewall's ASGPipeline™ reads rights-of-way alignment data and tabular information from a GIS, asset management system, or other spatial database, and renders a report that represents these data in vertically aligned bands in relationship to the corridor's spatial position. This representation consists of a map window that displays landbase or orthoimagery and the structural features of the pipeline route. Types of data presented can include pipeline attributes, stationing, class location values, HCAs, property ownership, crossings, and vertical profile and integrity inspection data.

A key differentiator of the ASGPipeline solution is advanced white-space management, which aligns and places station-based information along a sheet automatically, generating overflow sheets when data bands exceed the width of a single sheet. A customizable front end allows users to select from multiple existing alignment sheet formats and data sources using simple pull-down menus. The application can be configured to run on either individual client workstations or on a server in batch mode to produce sheets with minimum user participation.



For information, contact:

Clarence Young, Senior Project Manager

800 648 4202

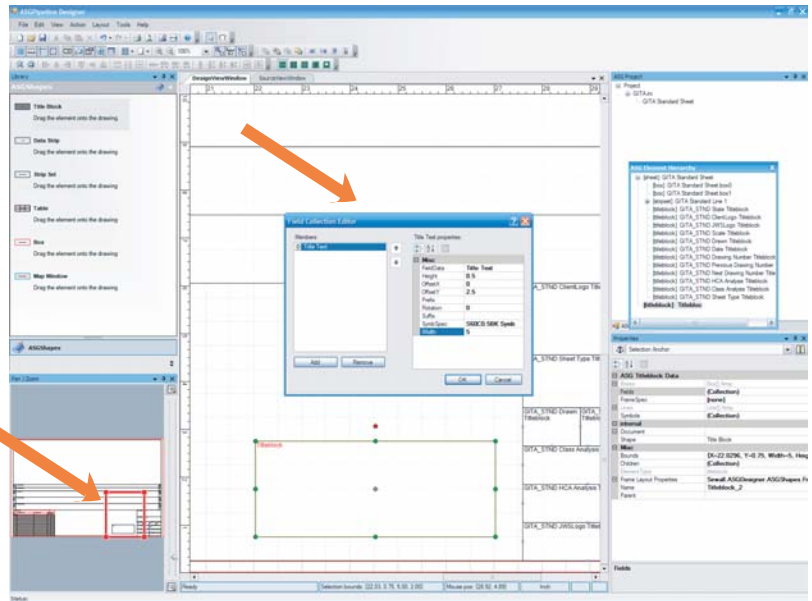
cyoung@sewall.com

ASGPipeline™ Generation 3.0

FEATURES AND BENEFITS OF GENERATION 3.0

ASGPipeline Generation 3.0, to be released in late 2009, introduces ASGPipeline Designer, a graphical interface for creating and editing sheet layout definitions. The Designer, which uses a design "canvas" and forms, simplifies and speeds up the sheet definition process. In addition, the Designer is backwardly compatible with existing ASGPipeline configuration files.

- Advanced white-space management eliminating the need for manual editing
- User-friendly interface for faster, intuitive sheet layout and content definition with the flexibility to customize map output
- Data on multiple, parallel pipelines available on individual sheets, reducing the number of sheets required
- Integrated support for schematics (crossings, deflections, and encroachments) in one application
- Consumption of data from various sources, including major GIS and asset management systems, preserving system investments and maintaining consistency across business units
- Export to major industry-standard file formats, such as Adobe PDF, MicroStation design (DGN), AutoCAD drawing (DWG), digital exchange format (DXF), and computer generated metafiles (CGM)
- Fast, efficient sheet design and generation for time and cost savings



Drag and drop sheet elements from the Library to the Sheet Design Canvas, which shows the arrangement of elements on the sheet. Select an element to resize it, or define its data source and other properties

MINIMUM SYSTEM REQUIREMENTS

Hardware

PC with 1.0GHz processor, 512MB RAM (or equivalent)

Core Software

ASGPipelineT

Microsoft Windows OS XP Professional or Vista

.NET Framework 3.5 or higher

MDAC Version 2.6

Microsoft Internet Explorer 5.5 or higher

Plus MS-SQL Server 2000 or Oracle 8.1.7 or 9i, plus one (1) client access license per software seat

Engine (Required for Generation 3.0)

AutoCAD2000 or higher, or

MicroStation Version 8.0 or higher

For more information on ASGPipeline Generation 3.0 and Sewall's full suite of integrity management software, contact: Clarence Young, Senior Project Manager; 800 648 4202; cyoung@sewall.com