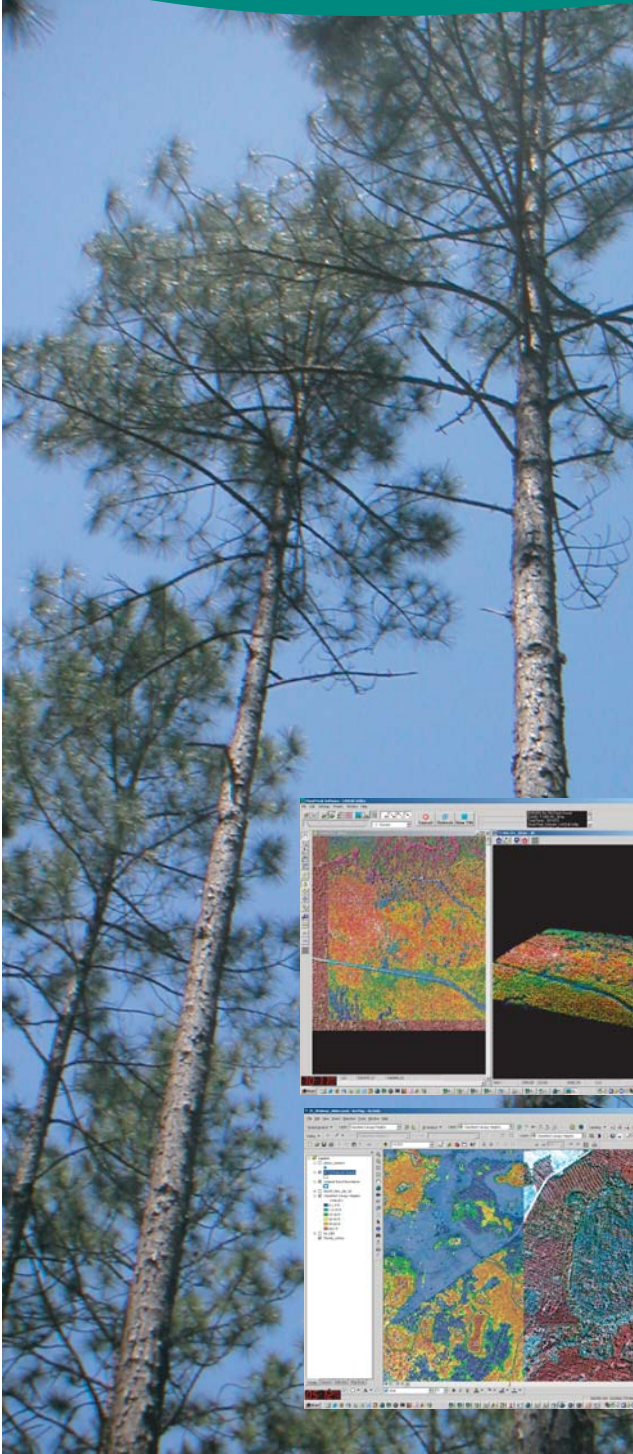


CanopyData™



ADDING VALUE TO INVENTORY

In recent years, forest landowners have become increasingly interested in LiDAR as a means to enhance information on their forest stands. The use of LiDAR, which captures detailed data on tree heights and canopy closure, adds value to forest inventory and management planning. The high cost of acquisition, however, places the technology out of reach to many owners and managers, who need accurate data and at lower cost.

WHAT IS CANOPYDATA™ ?

CanopyData™, Sewall's newest digital mapping solution, provides forest landowners with detailed information on tree stand heights and canopy closure at a fraction of the cost of LiDAR. The data set includes a 3D canopy height model (grid of tree height values) and map polygons with canopy height and closure attributes. Derived from a photogrammetric process, which automatically calculates elevations from aerial photography stereo pairs, CanopyData is a relatively inexpensive addition to an orthophoto project, and the deliverables are easily integrated with existing base and cover type mapping, inventory systems, and GIS. Currently used in several client systems, the CanopyData solution is now assisting foresters and land managers with a range of inventory and land management functions.

BENEFITS OF CANOPYDATA

- ▶ *Improves stratification*
 Adds biologically meaningful data to stand mapping and stratification, improving inventory control and forecasting
- ▶ *Substitutes for field height measurements*
 Lowers costs on higher-cost measurements (pre-commercial stands)
- ▶ *Supplements existing inventory data*
 Provides within-stand height/closure data for sub-stand prescriptions and harvest allocations

EXPLORE CANOPYDATA

Sewall recommends that our clients assess CanopyData, exploring how the product will work for their organizations, before applying on a large scale. We work with clients to create a pilot area, providing them with a representative sample data set at a modest cost.

For additional information on how CanopyData can meet your needs and to arrange for a pilot, please contact Randy Myers, Solutions Manager, at 256 383 3309; randy.myers@sewall.com



JAMES W. SEWALL COMPANY / Since 1880

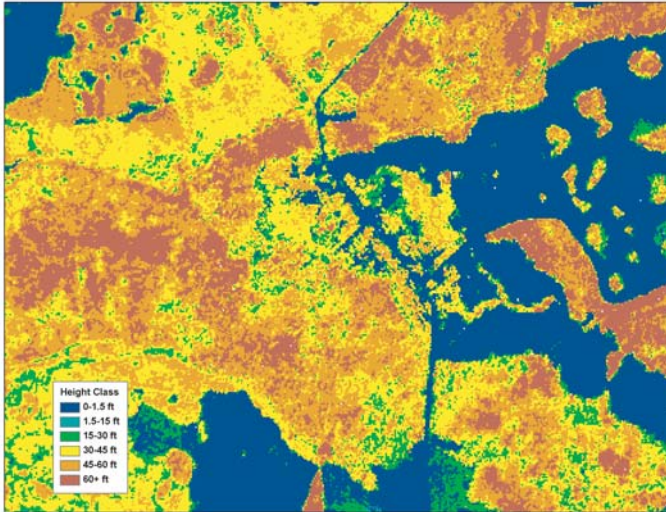
Offices nationwide

800 648 4202

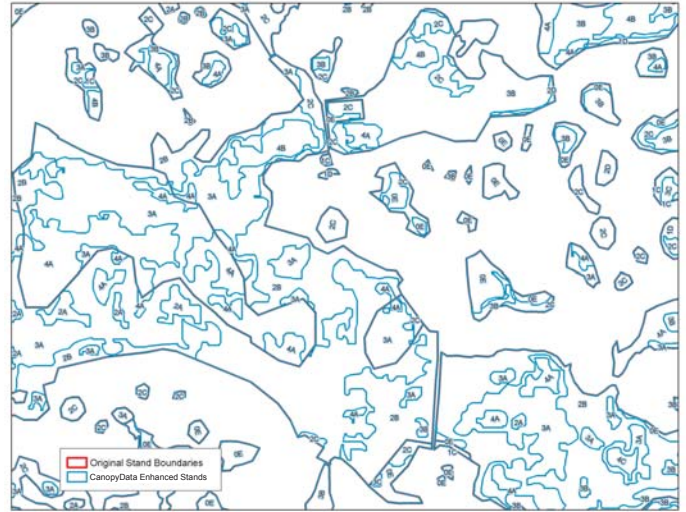
www.sewall.com

info@sewall.com

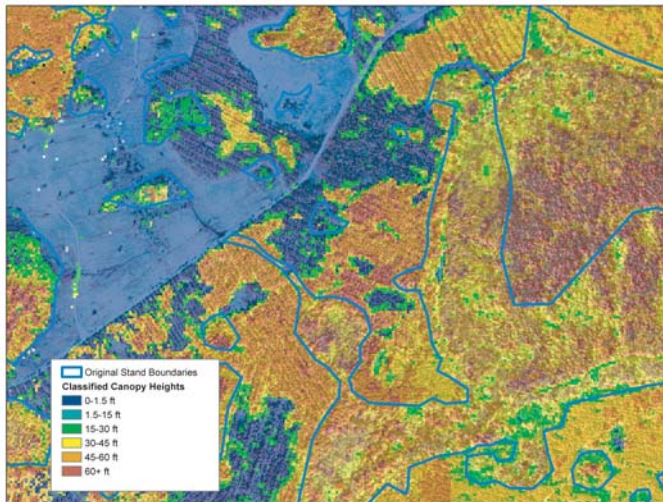
CANOPYDATA DELIVERABLES



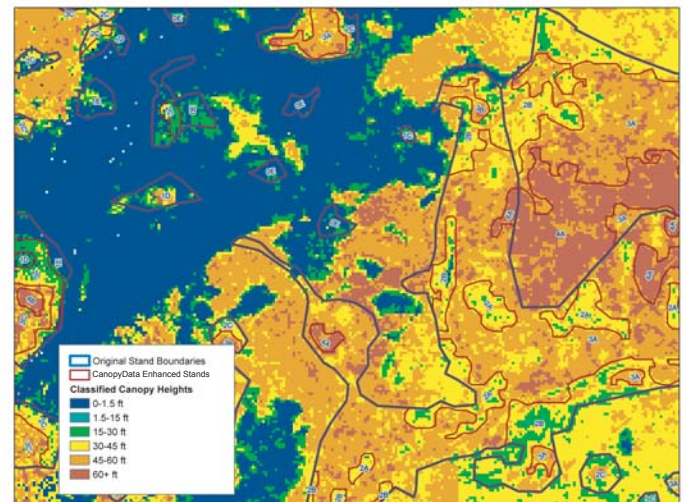
Grid of tree-height values



Polygons derived from height and closure grids using client-specific classes



Grid of tree heights overlaid on orthophoto, showing original stand lines



Grid of tree heights with new stand boundaries dividing original stands

For additional information on how CanopyData can meet your needs and to arrange for a pilot, please contact Randy Myers, Solutions Manager, at 256 383 3309; randy.myers@sewall.com



JAMES W. SEWALL COMPANY / Since 1880

Offices nationwide

800 648 4202

www.sewall.com

info@sewall.com