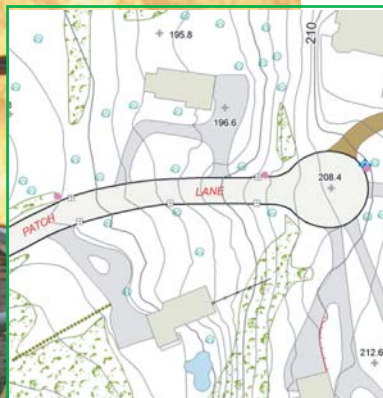




*When seconds
matter*



FASTER DISPATCH, FASTER RESPONSE

In an emergency situation, the power of accurate spatial data extends beyond the E911 dispatcher to fire, police, and emergency crews in the field. When seconds may mean the difference between life and death, the dispatch to responders must target the precise location of the call. With the dramatic increase in cell phone use, the challenge is much greater in complexity. E911 cell phone callers often cannot identify where they are.

The FCC now mandates wireless E911 calls to provide the dispatcher not only the call back number and cell site of the mobile phone, but also its x and y coordinates. With rapid access to accurate mapping, the dispatcher can relay precise location information to the field.

Sewall provides dispatchers with the critical map data required for responders to all E911 calls:

- Road centerlines
- Planimetric features (roads, buildings, waterways)
- Utilities infrastructure (fire hydrants)
- Emergency facilities (fire, police, hospitals)
- Digital orthophotography landbase
- Addressing information

For more information on Sewall's services, please contact:

Randy Myers
Solutions Manager
256 383 3309
randy.myers@sewall.com



JAMES W. SEWALL COMPANY / Since 1880

Offices nationwide

800 648 4202

sewall.com

info@jws.com