



Geospatial Enterprise Solutions



Your Needs

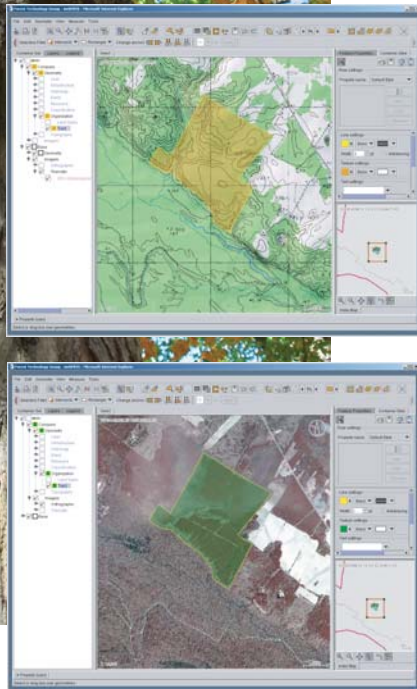
Timberland investment management organizations (TIMOs) are challenged to generate the largest return on investment possible for the lands entrusted to them. Strategic decisions on which land to buy, which land to sell, and how best to manage the lands they retain must be made quickly and with confidence. These decisions are often based on data that resides in numerous locations and in a variety of formats. Under pressure to meet certification and Sarbanes-Oxley requirements, TIMOs must develop systematic approaches to data management and decision making. Providing enterprise access to a single authoritative repository of current, consistent, and complete data is a critical first step.

The webFRIS™ Solution

webFRIS is a real-time, web-based enterprise geospatial solution for the management of forestry data through a centralized database. The system extends the power of GIS throughout an organization with only a standard web browser and Internet access, eliminating the need for specialized hardware and software. Web tools provide privilege-based access to users from anywhere at any time.

Your Benefits

- Rapid access to consistent, complete, accurate data
- Data sharing for collaborative decision making
- Improved communications company-wide
- Access to web-based analytical tools
- Ease in tracking state and privately owned land
- Reduced staff time on system and data development
- Reduced need for internal technical support
- Greater staff focus on core mission of organization
- Low upfront and lower overall costs
- Quick startup



For more information, contact: J. Randall Cercopely, Business Development Manager at 866 841 6717; randall.cercopely@jws.com or visit our web site at: www.webfris.com



JAMES W. SEWALL COMPANY / Since 1880

Offices nationwide

800 648 4202

sewall.com

info@sewall.com



webFRIS Modules

- **GIS Viewer/Editor.** webFRIS provides standard GIS tools to navigate, view, and edit data in real time via the web, with additional tools for accessing imagery, map production, querying, and import/export of data
- **Inventory.** webFRIS stores stand level data for a variety of products and species. The flexibility of the database structure promotes unique configuration for meeting your specific inventory requirements
- **Silvicultural Planning.** webFRIS provides real-time creation, modification, and completion of silvicultural data via the web. Users may create silvicultural plans one feature at a time or in bulk fashion using the batch upload module
- **Harvest Activities.** Access to planned and completed harvest activities encourage best management practices and aid in the certification process. Removals and residual volumes are automatically calculated based on the type of harvest being conducted
- **Custom Data Layers.** webFRIS supports the implementation of custom data layers that may be unique to your organization
- **Imagery.** On line access to government-provided digital ortho quads (DOQQs) and DRG imagery is available upon demand. Customized imagery can also be hosted or stored on a web mapping server within your organization
- **Growth & Yield.** Seamless integration with growth and yield models make "what if" scenarios a reality
- **Timber Inventory System (TIS).** The TIS allows foresters to upload cruise data, process the data into stand level volumes, and then upload that data to the centralized database in webFRIS

For more information on the webFRIS solution, please contact J. Randall Cercopely, Business Development Manager at 866 841 6717; randall.cercopely@jws.com or visit our web site at: www.webfris.com